

# WELCOME TO

# EPower

E-Power integrates thermal sensors and AC relays for safer buildings with enhanced energy efficiency.





# PRODUCT DESCRIPTION:

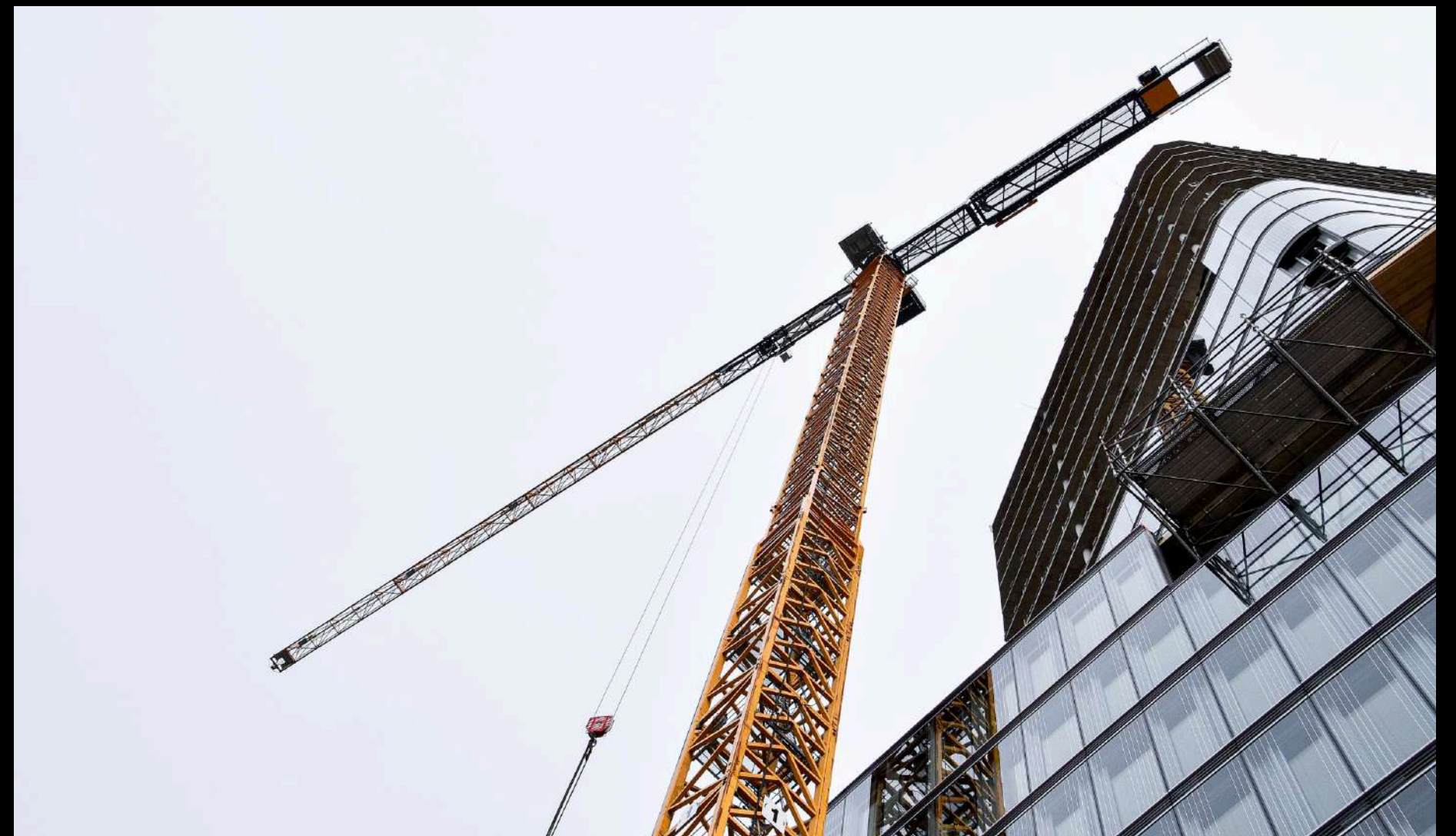
E-Power integrates thermal sensors and AC relays for safer buildings with enhanced energy efficiency.

E-SafeGuard by E-Power revolutionizes electrical system safety. Incorporating advanced features such as thermal sensors, AC relays, and seamless integration with Building Management Systems (BMS), it proactively monitors building wiring. The system's automatic alerts and branch interruption capabilities ensure swift response to potential fire hazards, while user notifications contribute to a safer living environment.

With a focus on customization and scalability, E-SafeGuard offers tailored solutions for building operators, emphasizing energy efficiency and cutting-edge technology to redefine safety standards in the electrical infrastructure.

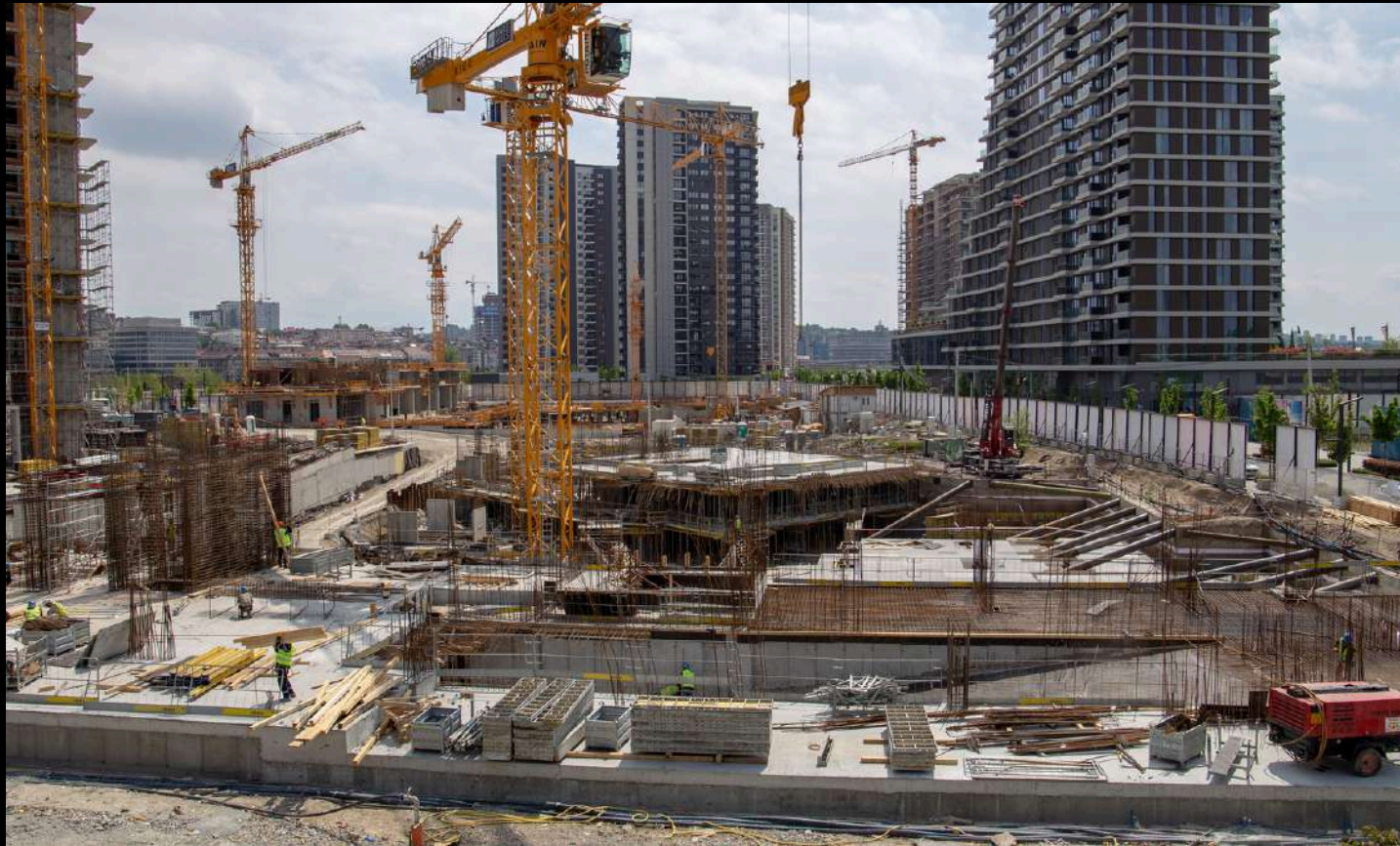
# FEATURES

- Thermal Sensors
- AC Relays and LED Displays
- Automatic Alerts
- Branch Interruption
- Customized Solutions



[WWW.EPOWER-CO.COM](http://WWW.EPOWER-CO.COM)





# INNOVATION POINTS OF EPOWER

1. Tailored to the specific needs of building operators and BMS providers.
2. Ability to modify alarms based on user experience feedback.
3. Ability to add new sensors based on the employer's request.
4. Creating a dedicated port for updating the product due to smart building tech advances.

[WWW.EPOWER-CO.COM](http://WWW.EPOWER-CO.COM)



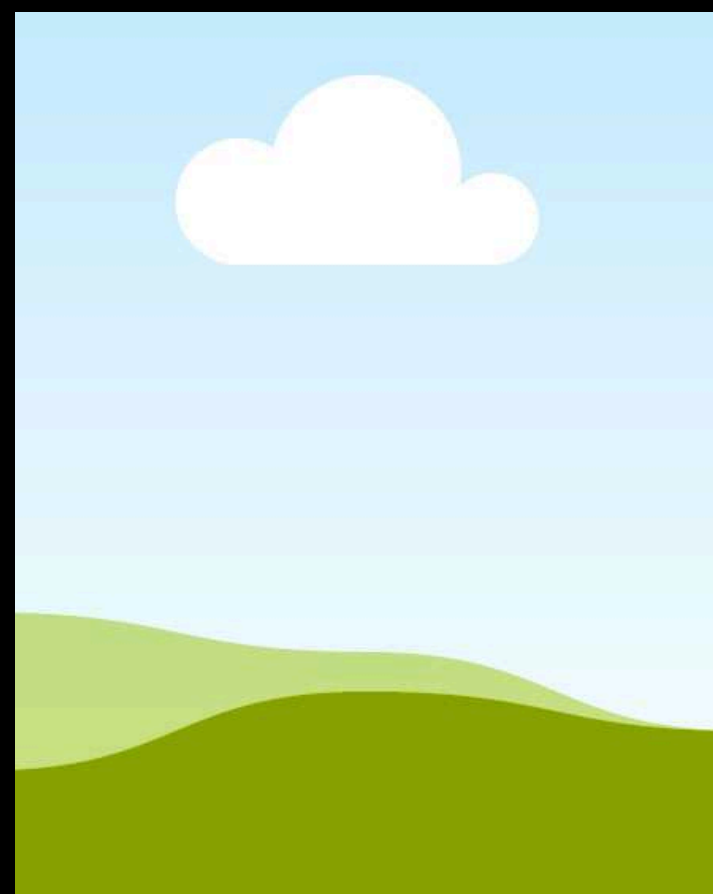
# MARKET SIZE

The global electrical equipment market, encompassing power generation, distribution, lighting, signaling equipment, and household appliances, grew from \$1503.21 billion in 2022 to \$1630.86 billion in 2023, exhibiting a CAGR of 8.5%.

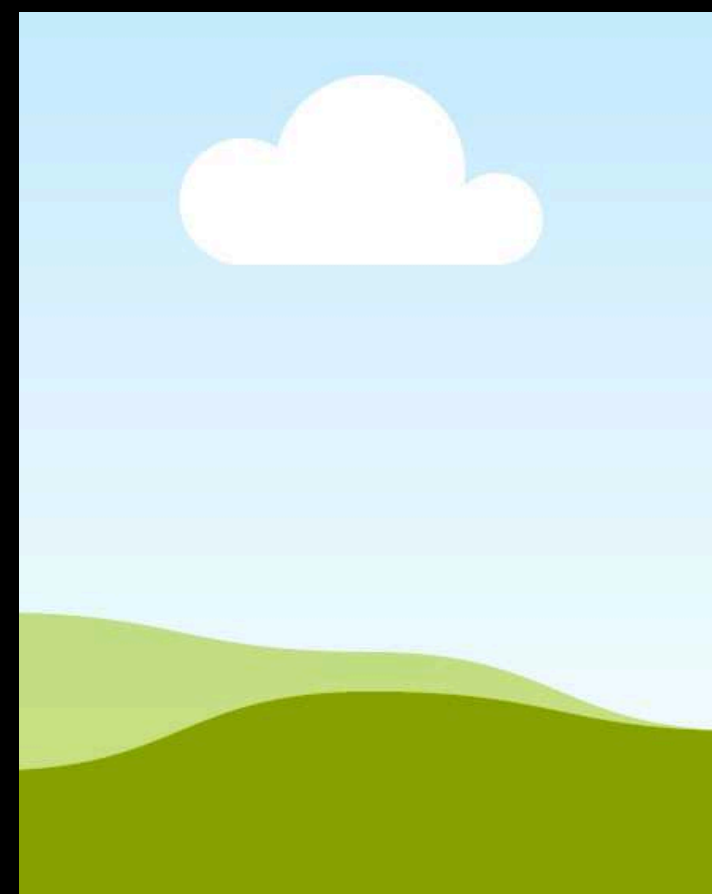
The segment related to controlling devices, including fuse boxes, constitutes a fraction of this market. Specifically, the circuit breaker and fuse market, valued at USD 15.05 billion in 2022, is projected to grow at a CAGR of 5.4% from 2023 to 2030.



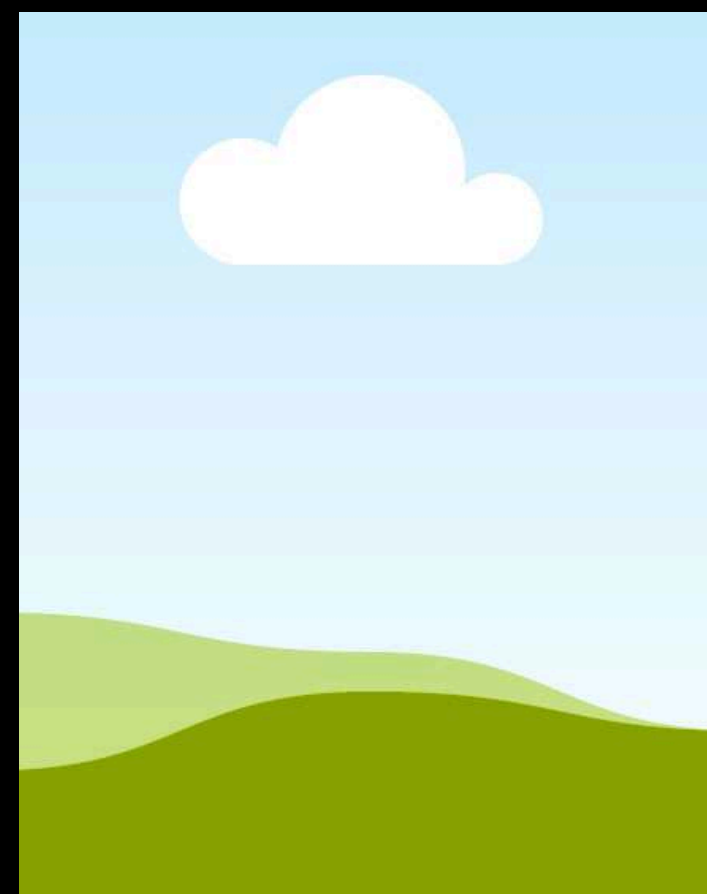
# TEAM MEMBER



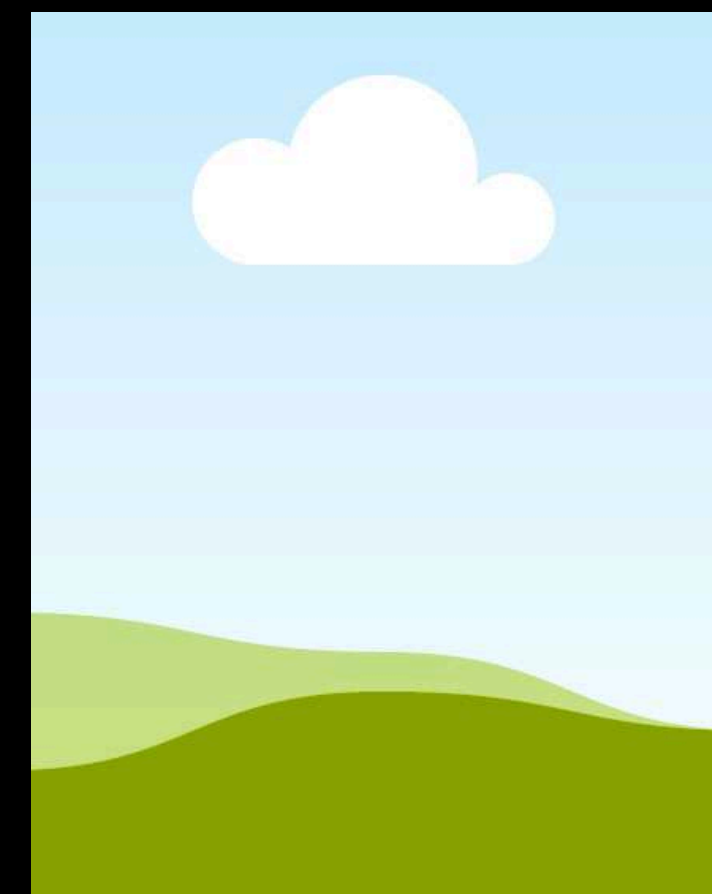
LOEREM IPSUM



LOREM IPSUM



LOREM IPSUM



LOREM IPSUM





# CONTACT US

15 Wellesley St W Unit 201, Toronto, ON M4Y 0G7,  
Canada

+1 647-607-4986





**THANK YOU**